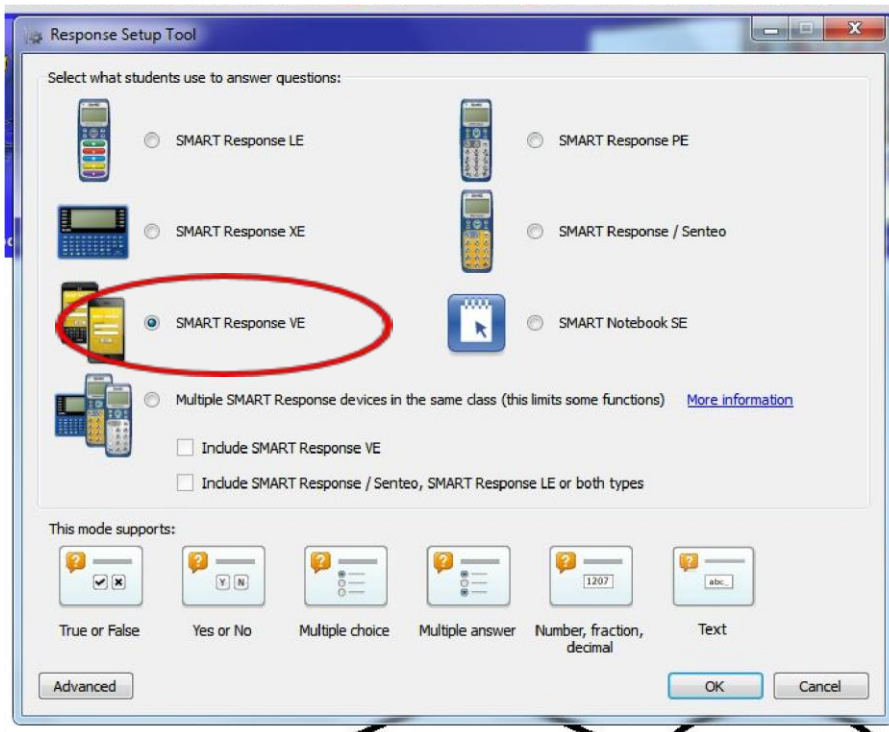


From start menu:

Choose Smart Technologies, Smart Tools, Response Setup Tool



This dialog box pops up. Choose SMART Response VE and hit ok.

Open the desired document in SMART Notebook. Choose response, start assessment. The window that pops up has the website and the id number students will enter on it. The ID number is also on the left side of test.

The screenshot shows the SMART Notebook application window titled "MB 10.3 - SMART Notebook". The interface includes a menu bar (File, Edit, View, Insert, Format, Tools, Response, Add-ons, Help) and a toolbar with various icons. On the left sidebar, the assessment details for "MB 10.3" are shown, with the ID "252691" circled in red. Below this, there is a "Description" section with fields for Title, Type, Subject, and Topic. A "Summary" table lists the assessment components: 1 Multiple Choice (1 mark), 5 Numeric (5 marks), and 1 Text (1 mark), totaling 7 marks. The "Assessment Delivery Mode" is set to "All questions at their own pa...".

The main content area displays the "Math Boxes" assessment. A central dialog box titled "Assessment Started" provides the following information:

Students need the following information to connect:

Website:
response.smarttech.com

Assessment ID:
252691

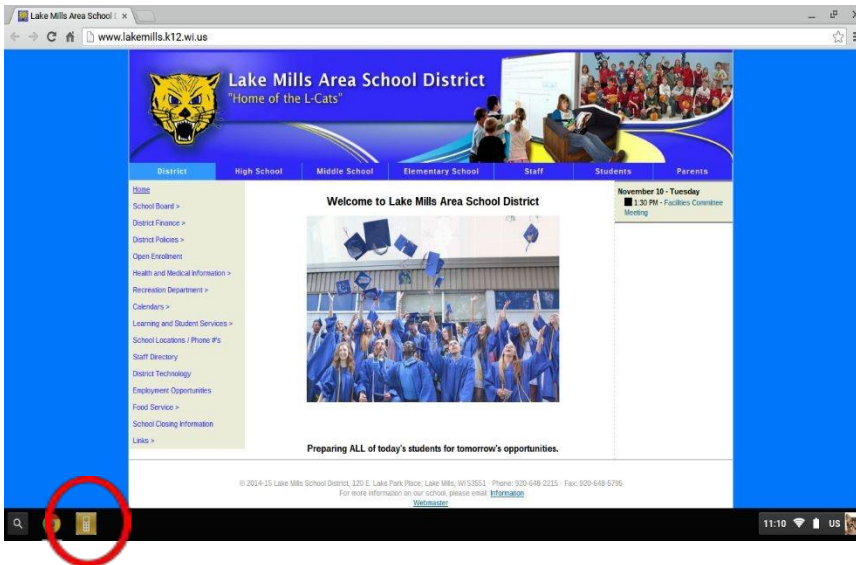
Buttons for "QR Code" and "OK" are visible at the bottom of the dialog.

Below the dialog, two math problems are visible:

4. Angle ART is an **5** (acute or obtuse) angle.

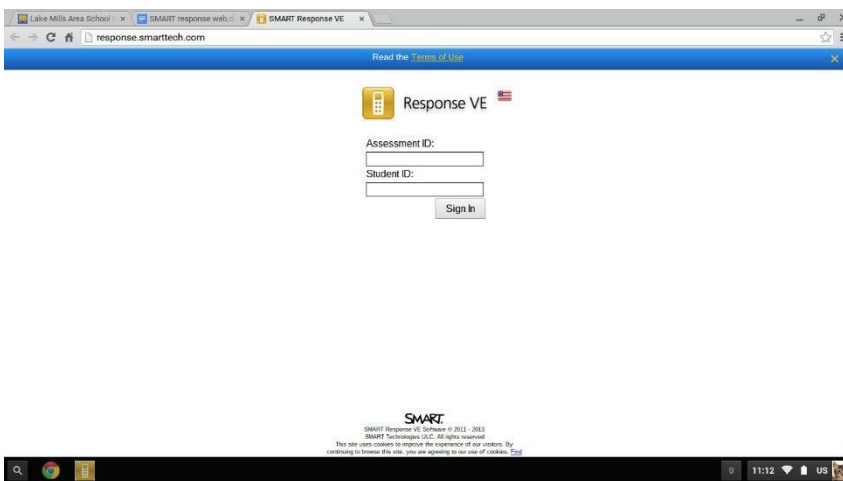
5. Alberto and Lara estimated the weight of their adult cat. What is the most reasonable estimate? Fill in the circle next to the best answer.
 A. 2 pounds
 B. 10 pounds
7

Directions to get students logged in:



When students log into Chromebook they will see an orange icon on their taskbar. They will click this.

If they are on iPads or computers they will go to the webpage given in picture above: Response.smarttech.com



This is the screen that comes up. They will enter in the id and their classroom id. If you are in anonymous mode you will leave student id blank.