

LMASD_BYOD Wireless Network Connection Help

If you have your own personal device or cell phone and want to connect to a wireless network within a District building, open the wireless network listing on your device and choose **LMASD_BYOD**. If this wireless network is not listed, select **Add Network**.

While it is not possible to offer a step-by-step guide for all available devices, the information that must be entered to add a network will be much the same as what is included in the Windows 10 connection directions below.

Please note that all devices will ask for a User Name and Password. This is the same User Name and Password that you use to log in to a *school* computer.

Windows 10

1. In Windows, navigate to **Control Panel>Network and Internet>Network and Sharing Center**.
2. Click **Set up a new connection or network**.
3. Highlight **Manually connect to a wireless network**.
4. Click **Next**.
5. Enter the following information on the **Manually connect to a wireless network** screen:
 - Network name: **LMASD_BYOD** (This is case sensitive.)
 - Security type: Choose **WPA2-Enterprise**
 - Encryption type: **AES**
 - Check **Start this connection automatically**
 - Check **Connect even if the network is not broadcasting**
6. Click **Next**.

Manually connect to a wireless network

Enter information for the wireless network you want to add

Network name: ←

Security type: ←

Encryption type: ←

Security Key: Hide characters

Start this connection automatically ←

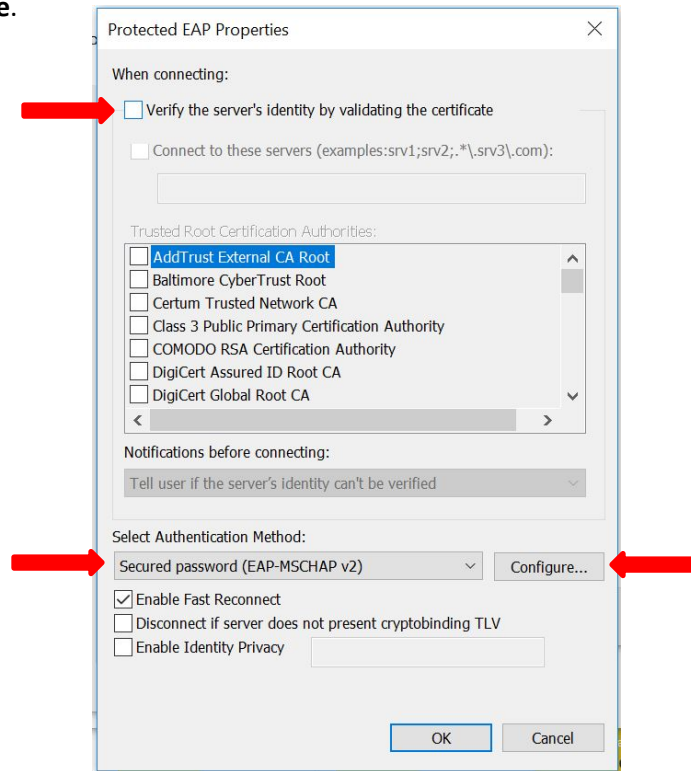
Connect even if the network is not broadcasting ←

Warning: If you select this option, your computer's privacy might be at risk.

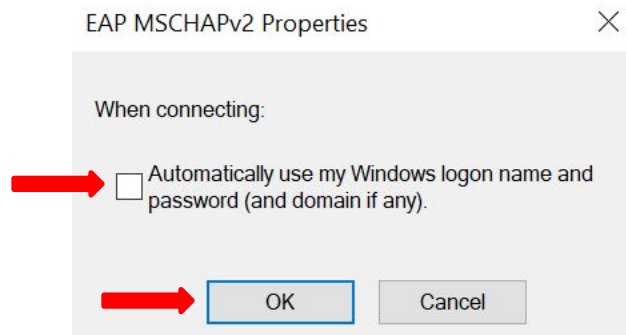
Next Cancel

7. Click **Change connection settings**.
8. Click **Security** tab, then **Settings**.

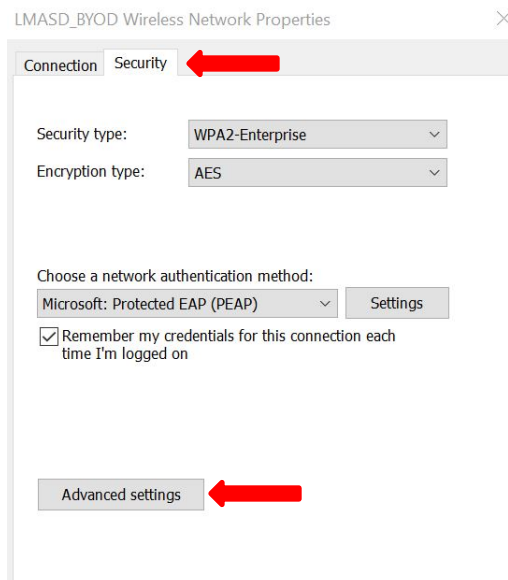
9. Uncheck **Verify the server's identity by validating the certificate.**
10. Select **Secured password (EAP-MSCHAPv2)** as the Authentication Method.
11. Click **Configure.**



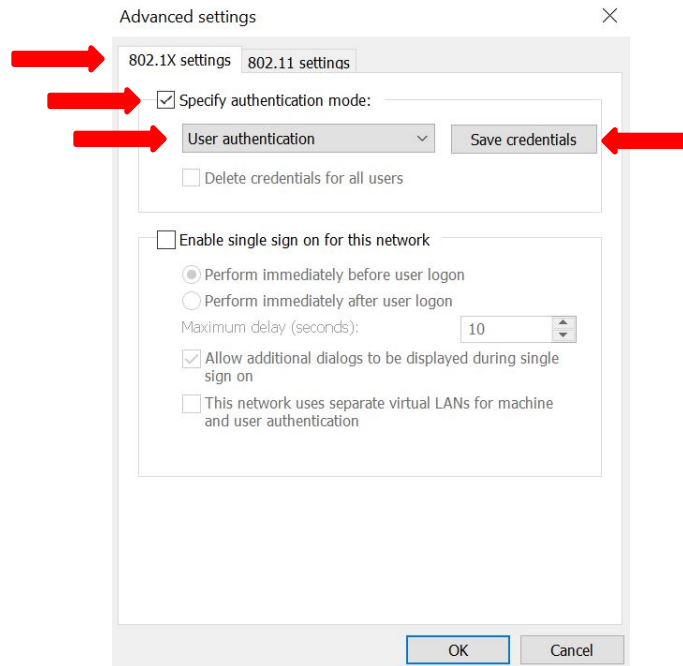
12. Uncheck **Automatically use my Windows logon name and password (and domain if any).**
13. Click **OK.**



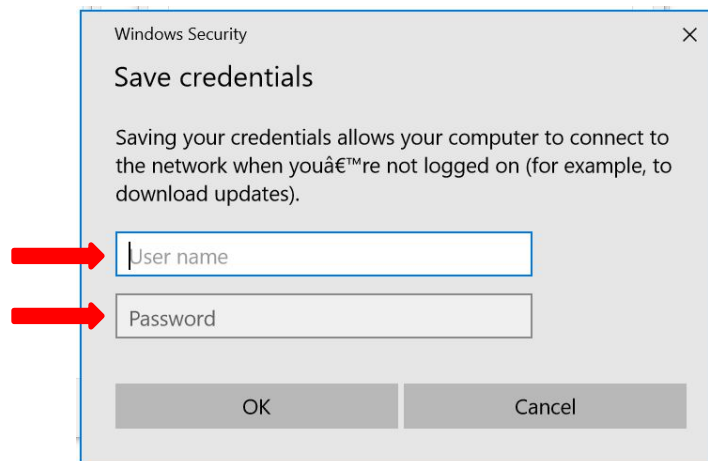
14. Click **OK.**
15. From the **Security** tab, click **Advanced Settings.**



16. Select the **802.1X settings** tab.
17. Check **Specify authentication mode:**
18. Choose **User authentication**.
19. Click **Save credentials**.



20. Add your User Name and Password (the same User Name and Password you use to log into a **school** computer).



21. Click **OK** three times and then **Close**.

Please use these directions as a guide and, if further assistance is needed, please contact a Building Technology Coordinator.